

Chapter 1

Pool Site Preparation Checklist	1
AutoGuard Preparation Checklist	2
Recommended Tools Checklist	3

Chapter 2

Installation of Standard Undertrack	4
Installation of Retainer Undertrack	7

Chapter 3

Installation of Toptrack	10
------------------------------------	----

Chapter 4

Installation of AutoGuard System	14
--	----

Chapter 5

Instructing the Customer	25
Safety Checklist	26

Chapter 6

Frequently Asked Questions (FAQ)	27
Diagnostic Service Information	28

Prior to installing the AutoGuard automatic pool cover, make sure the pool site is prepared properly and is ready for installation of the AutoGuard. Site is ready for installation when all items have been checked.

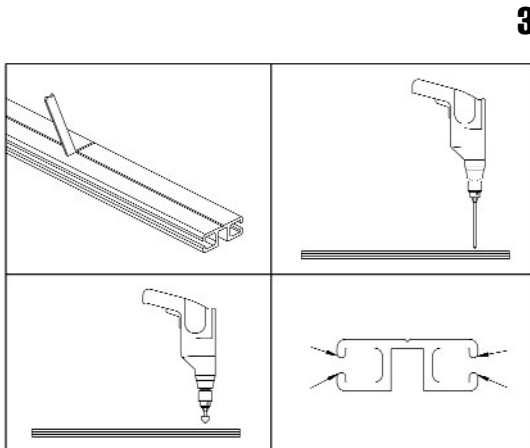
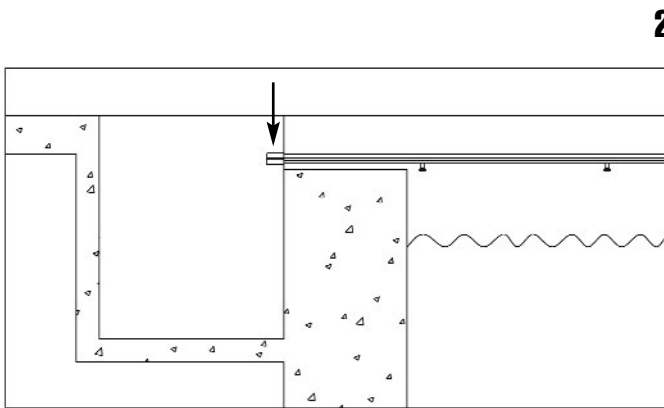
- Water level is at normal operating level. Water at middle of skimmer.
- Assess area for any potential obstructions (i.e. grab rails, ladders, slides, sports poles, fountains, etc.) for the automatic cover to run .
- Deck is complete and secure (no pavers) with plenty of room for track and lid assembly.
- Recessed box is free from concrete, nails, or any type of obstruction.
- Recessed box is correct height, width, and length. Box is square to pool.
- Electrical and remote keyswitch wires are in place with GFCI protection.
- Retainer, if applicable, is free of debris and/or concrete.
- Measurement of pool track space, track length, and diagonal are accurate with order (see picture of measurement procedure, fig.14, chapter 3).
- Pool bonding wire in place.
- If drilling undertrack, make sure poured coping has 2" flat surface to secure track and enough clearance for track at bond beam end.
- Proper and adequate drainage in recessed box to remove water quickly.

Before starting to install the AutoGuard automatic pool cover, inspect all parts to assure accuracy and that all items are included for the installation. If any items are missing or damaged, call your AutoGuard supplier immediately.

- Visually inspect all contents for any damage and that all items are included.
- Open accessories box and look over documentation to make sure what was ordered, measured, and received are all within the range of acceptance. Also, confirm fabric color (**note:** the fabric wrap is not always the same color).
- Measure all extrusions and cover to ensure accuracy with final pool measurements. Cover will be approximately 6"-9" wider than the track space.

- Battery operated drill
- Electric drill (preferably a hammer drill)
- Wrenches/sockets:
 - 7/16", 1/2", 9/16" sockets
 - 7/16", 1/2" 9/16" combination wrenches
- Phillips and flat head screwdrivers
- Hacksaw with 18 tooth blade
- Hammer
- 12" Torpedo level
- Drill bits:
 - 1/4", 5/32", 11/64", #2 Phillips, #3 Phillips,
 - 1/4" x 4" and 6" masonry bit
 - 1/2" x 4" masonry bit
 - 5/16" nut driver, and 7/16" socket driver, countersink
- 1/2" Round bastard file
- Wire strippers with cutters
- Circular saw or Jigsaw/Battery saw to cut aluminum.
- 25 ft tape measure
- 100 ft tape measure
- 100 ft string
- Flat shovel
- Box knife
- Scissors
- Extension cord(s)
- Broom
- 6-8 "C" clamps (for undertrack installations)
- Right angle drill (optional)
- Cigarette lighter or butane torch

Install track after coping and tile is set but before plaster. It is a lot easier to drill the holes for the track without water in the pool; if the pool is filled with water, you will need to lower the water level so you can safely drill the track. **Make sure measured track space is equal to ordered track space (fig. 1).**



Step One – Layout Tracks

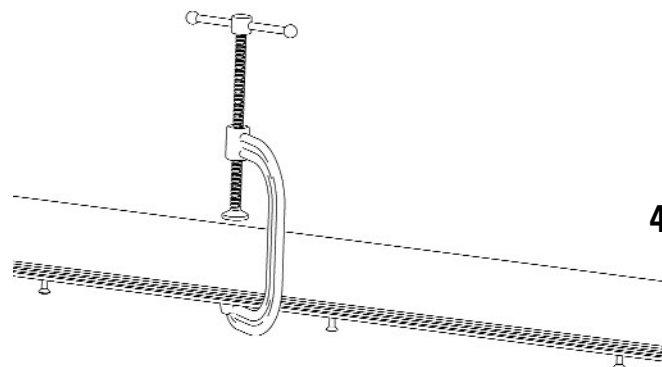
Make sure all ends of tracks are filed and countersunk. Lay the tracks parallel to the pool on top of the coping down both sides with the pulley housing at the opposite end from the recessed box. Take a piece of track with the pulley housing attached and line it up with the end of the pool wall (fig. 5, page 5). Make sure to leave room for any tile work to be done, but far enough under the coping to assure the cover will close completely. Take the next piece of track on the same side and butt it up against the previous one.

NOTE: *If the track length is over forty-four (44') feet, splice a third piece of track per side. Never install a piece of track less than five (5') feet, if needed cut one of the full pieces of track down to accommodate the extra piece.*

Once the track is laid out on the deck correctly, cut off any excess track with a hacksaw or circular saw with the final piece of track (3/4") inch inside the recessed box (fig. 2).

HINT: *Do not cut the track where the splices meet. It is best to keep the manufactured cuts at the splice.*

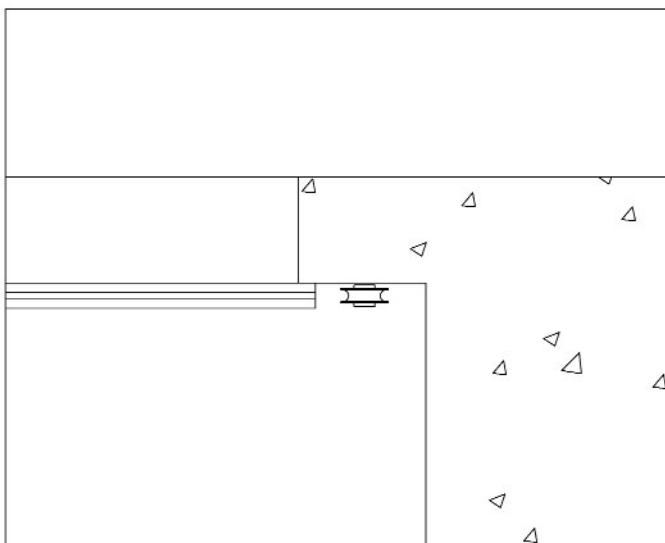
There needs to be a track screw fastened within six (6") inches from the bond beam. Depending on the location of the predrilled hole, you may have to drill and countersink an additional hole to secure this end of the track (fig. 3).



4 Step Two – Clamp Tracks to Coping

Next, file and countersink all ends of the track to make sure there are no sharp edges to rub on the rope or webbing. Repeat the above steps for the other side of the pool.

Mount tracks under the coping with “C” clamps (fig. 4). Start with the pulley housing piece of track at the far end of the cover housing. Drill the track so the pulley housing is under the coping (on the far end) leaving enough room for any tile work (fig. 5). The edge of the track should be flush with the edge of the coping down the entire pool side. Insert the aluminum track splice where the two tracks splice together. Clamp the tracks to the coping making sure the splice is tight. If the tracks are uneven at the splice, “shim” a track to align the rope channels.

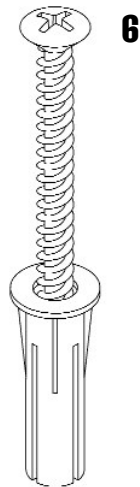


5

Step Three – Drill Tracks

With the tracks clamped in place, use a hammer drill with a 1/4" masonry drill bit. Drill holes in the coping to (2") inches deep.

WARNING: Be careful not to drill through thin coping or brick mortar. If holes in tracks are lined up over mortar joints, drill hole using a regular drill with 1/4" masonry bit, not a hammer drill. If there are end or corner steps to the pool, you may need to use an angle drill to drill and secure the tracks above the step area.



Step Four – Track Screws and Anchors

It is important to assemble the track and anchor by inserting the track screws into the red anchors (fig. 6). It is easiest if you assemble all prior to starting to put into the tracks. Tap in the screw and anchor assembly into the track hole.

IMPORTANT: Anchor must be set into coping before tapping into place to avoid breaking anchor.

Tap the anchor and screw assembly until the top of the screw is 1/2" from the track.

Step Five – Tighten Track Screws

Use an electric or cordless drill with a #3 Phillips screwdriver. Tighten track screws into the tracks. As you tighten the screws be careful that you don't go too fast and crack the coping or burr the top of the track screw. Continue on to the installation of the system.

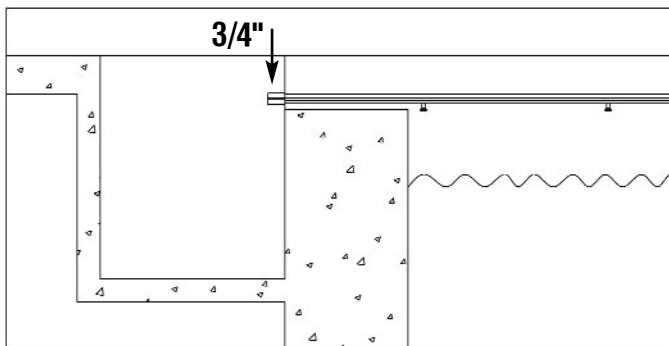
Proceed to **Installation of the AutoGuard System** (Chapter 4), Steps One through Six, prior to beginning this chapter. Once those steps are completed **make sure the retainer is free of all debris** (concrete, dirt, etc).

Step One – Layout Tracks

Lay the tracks parallel to the pool on top of the coping down both sides with the pulley housing at the opposite end from the recessed box. Take the next piece of track on the same side and butt it up against the previous one. The splice opening is always face up.

NOTE: *If the track length is over forty-four (44') feet, you will need to splice a third piece of track per side. Never install a piece of track less than five (5') feet. If needed, cut one of the full pieces of track down to accommodate the extra piece.*

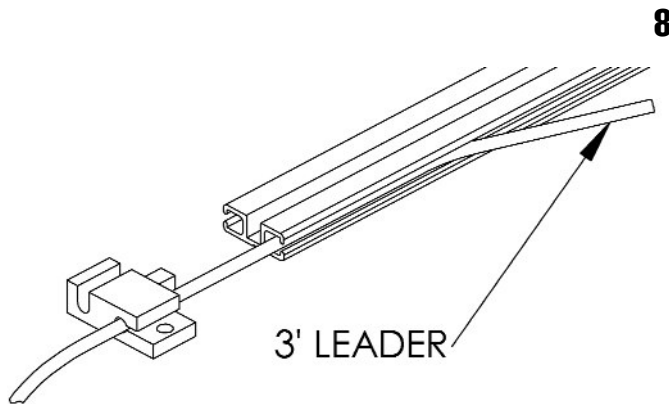
7



The track needs to extend (3/4") inch into the recessed box (fig.7). Once the track is laid out on the deck correctly, cut off any excess track with a hacksaw or circular saw.

HINT: *Do not cut the track where the splices meet. It is best to keep the manufactured cuts at the splice. Cut track at box end.*

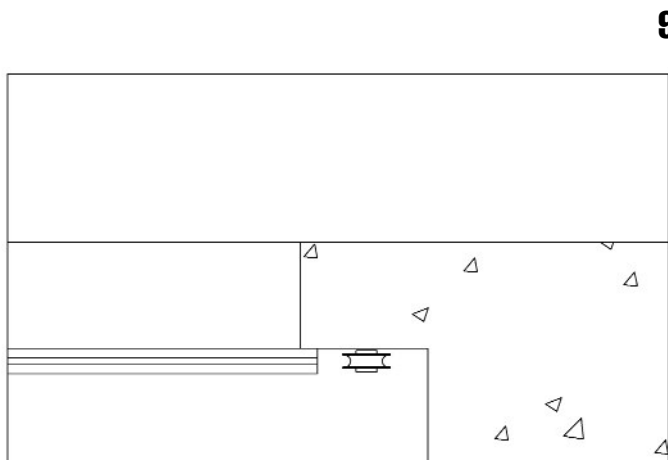
Make sure to file and countersink any new cuts to the track. Repeat the above steps for the other side of the pool.



Step Two – Pulling Rope Through Tracks

With the track still on top of the deck, install the track splice on both sides. Lay fabric out behind recessed box with the topside (smooth side) up showing warning labels. Uncoil both ropes and be careful not to tangle or knot. Feed the end of the rope through the opposite side guide leaving three (3') feet and then pull through the front channel of the track (fig. 8). Install the guide into track.

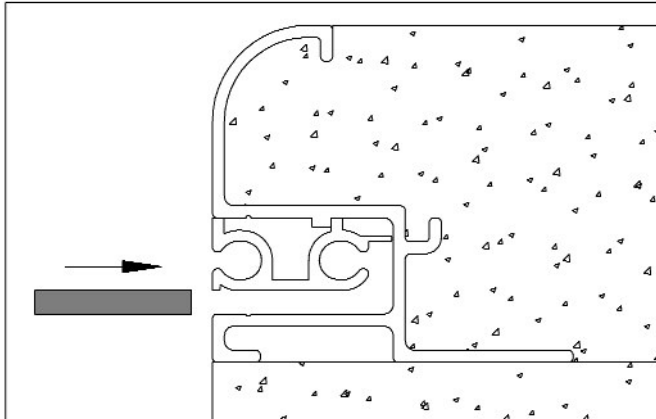
Pull rope down to the far end of the track. Feed around the track pulley assembly (fig. 9) while maintaining a three (3') foot leader and down the backside channel of the track through the back channel of the guide. Pull excess rope through until the front of cover is touching the guide. Repeat this step for the motor side track.



Step Three – Installing and Securing Track Into Retainer

Make sure the retainer is clear of any concrete, dirt, etc. and ready to install the undertrack. Once both ropes are pulled through the tracks, lower the tracks and slide into the retainer. Make sure the track placement is correct with the overhang in the recessed box of (3/4") inch. Also, make sure the track splices are together tightly with no gap between the tracks. Remember the splice faces up when inserting the track.

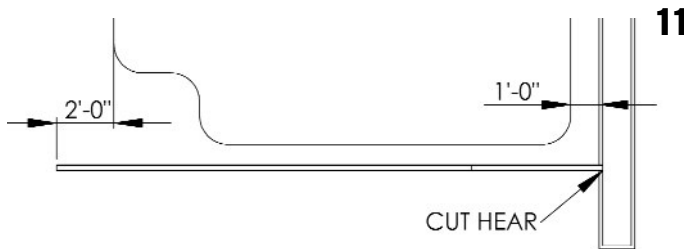
10



Starting at the pulley housing at the opposite end of the pool, install the track wedges (fig. 10). Proceed inserting wedges up to the guide: **make sure splice is together when installing wedges.** Drill and install a (1/4") inch bolt or long track screw (depending on the recessed box type) through the track and into the retainer at the guide end of the track. This is done to prevent the track from moving while the cover is operating. **This is vital to the installation.** Repeat the above steps for the other side of track.

At this time, the track is completely installed. Return to Step Seven A (7A) of the **Installation of AutoGuard System** (Chapter 4) to complete the installation.

With the toptrack installation, the cover and extrusions are manufactured in accordance with the ordered **track space**. This track space is measured from the **track channels** not the **inside edges** of the track (fig. 13).



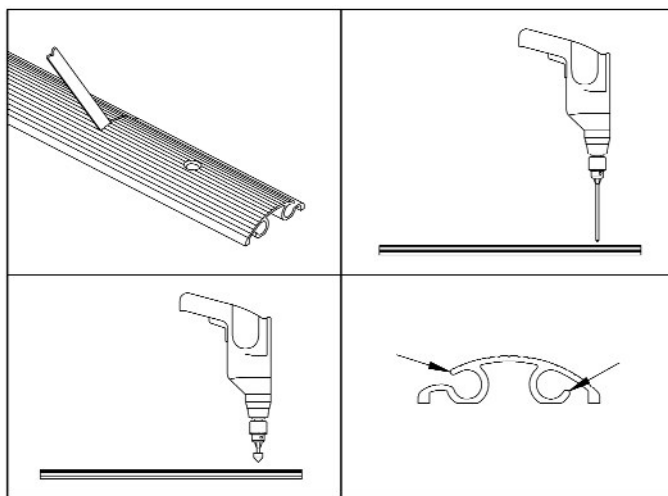
11

Step One – Layout Tracks

Make sure all ends of the tracks are filed and countersunk. Measure from the inside front of the recessed box to the opposite end of the pool and add two (2') feet for overlap at the opposite end of the pool. **This is the track length.** Layout the tracks on the sides of the pool, insert a track splice and cut off any excess track with a hacksaw or circular saw at the recessed box end (fig. 11). If any of the track requires cutting, remember to file and countersink again.

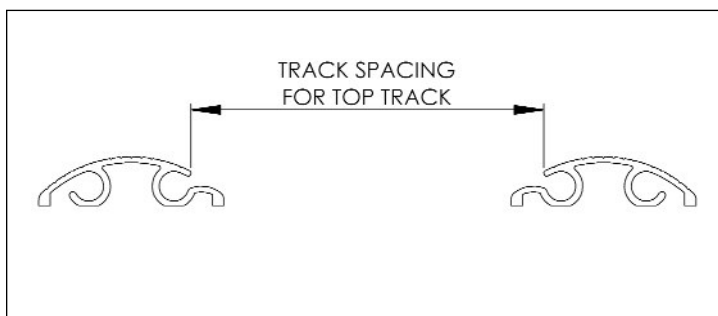
HINT: Do not cut the track where the splices will meet. It is best to keep the manufactured cuts at the splice.

NOTE: If track length is over forty-four (44') feet, you will need to splice a third piece of track per side. **Never** install a piece of track less than five (5') feet. If needed, cut one of the full pieces of track down to accommodate the extra piece.



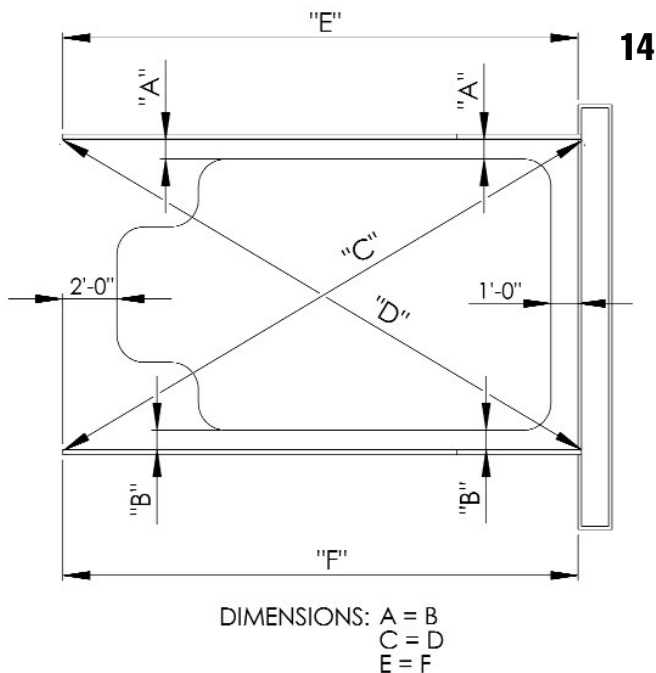
12

13



If the manufactured holes are cut off, drill new holes three (3") inches from the track end and three (3") inches from the splice end. Use a 1/4" drill bit and countersink (fig. 12). Again, make sure all corners and edges are filed to eliminate the rope or webbing from tearing.

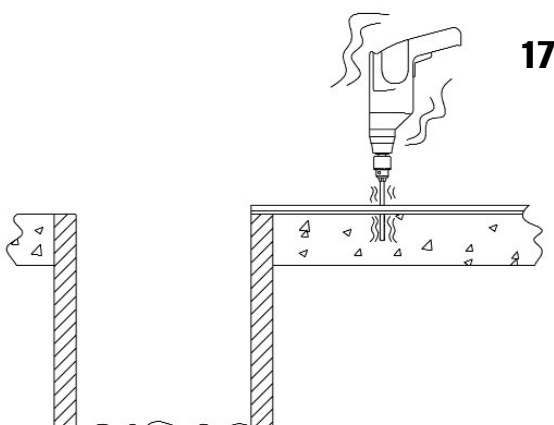
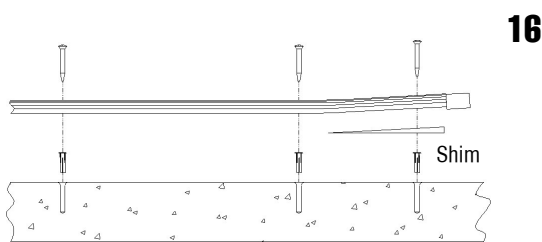
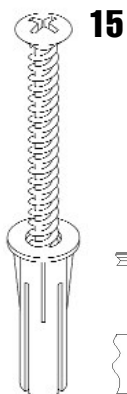
Align the tracks with the inside edge of the recessed box on both sides and measure the distance between the tracks. **This is your track space** (fig. 13). Place the



tracks equal distance from each side of the pool (fig. 14). The track space needs to be the same at the recessed box, the splice, and the opposite end to make sure they are parallel. Next, take a diagonal measurement and adjust accordingly.

HINT: Move both tracks at same time to maintain track space. The diagonals must be within two (2") inches, no more (fig. 14). The goal is to make the physical track space the same as the ordered track space; therefore, both tracks may need to be adjusted in or out to make all measurements within standard allowance.

The mechanism, main tube, lead edge, and fabric are based off of the ordered track space.



Step Two – Drill Tracks

Assemble the track screws and anchors prior to installing into the tracks, **including the two 2 1/2" track screws**. This is done by twisting the screw into the red anchor (fig. 15).

Place one cedar shim under each track end nearest the recessed box (fig. 16). Using a hammer drill with a 1/4" x 6" masonry bit, drill a hole closest to the recessed box three (3") inches deep (fig. 17). Install one of the long track screws (2 1/2") by tapping the screw and anchor through the track and cedar shim into deck so that the anchor is flush to the top of the concrete. **Do not tighten down the track screws at this time.**

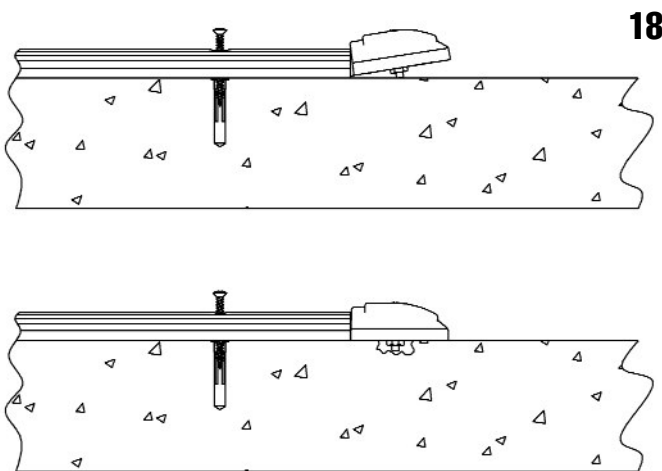
Make sure the track splice is snug together and walk down to the opposite end and drill the last hole three (3") inches deep and install track screw/anchor **but do not tighten down.**

***HINT:** Stand on the track while drilling to prevent track from shifting.*

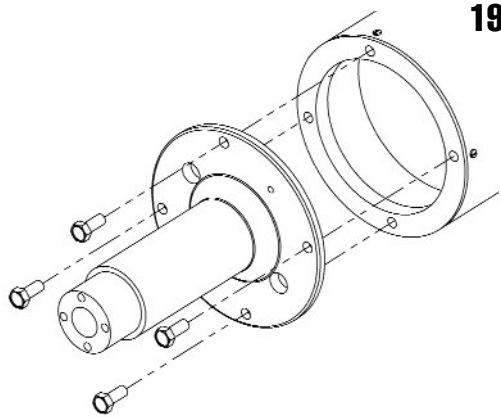
To keep the track straight, run a string down the track from one end to the other and mark the deck with a pencil or tape before drilling the remaining holes. Hammer drill one (1) hole on each side of the track splice(s) and install screws/anchors. Finish drilling and inserting screws/anchors into remaining holes. Once this is complete, follow the same steps for the opposite side track.

***NOTE:** If there is a slide, may require use of an angle drill or angle attachment to drill holes under slide.*

When all tracks are drilled and loosely secured with the screws/anchors, go to the far end of the pool and insert the pulley casting assembly into the end of the track. Tap the top of the pulley casting to create a mark in the deck, remove pulley casting and drill a 1/2" diameter hole (3/4") inches deep on the mark (fig. 18) to recess the pulley nut into the deck. Repeat this step on the other side. Continue on to the installation of the system.



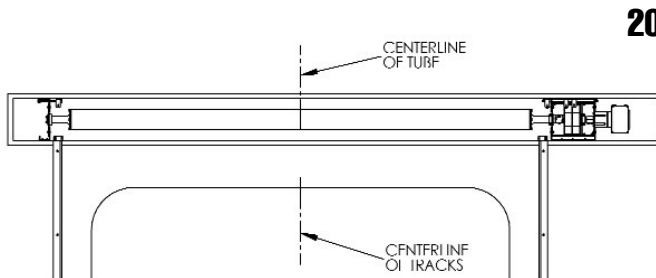
Notes:



19

Step One – Attach Main Tube to End Castings

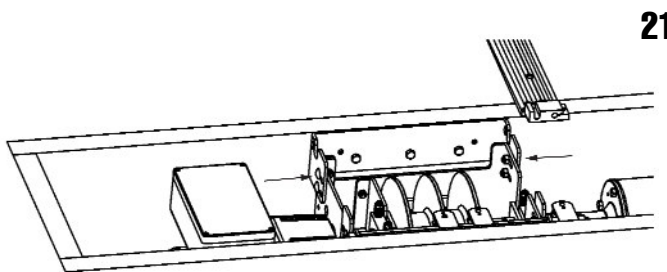
Using four (4) hex head cap screws (p/n HC-0019) and (4) lock washers per end, attach the main tube to the motor and opposite end castings with a 1/2" wrench (fig. 19).



20

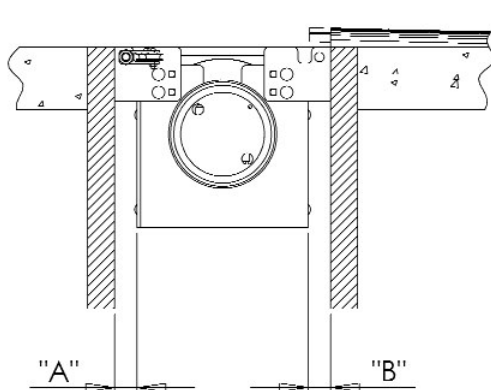
Step Two – Install Mechanism

Set the mechanism inside the recessed box. Measure the distance between the two tracks and find the halfway point and mark it on the front of the recessed box. The mechanism will have a line at the center point of the main tube. Align the two marks and this will center the mechanism between the track space (fig. 20).



21

Loosen the mounting bracket bolts (fig. 21) on the mechanism and opposite end with a wrench so the bracket can adjust in and out. Center the mechanism from front to back (fig. 22). When the mechanism is aligned properly, lightly tighten bracket bolts with wrench.



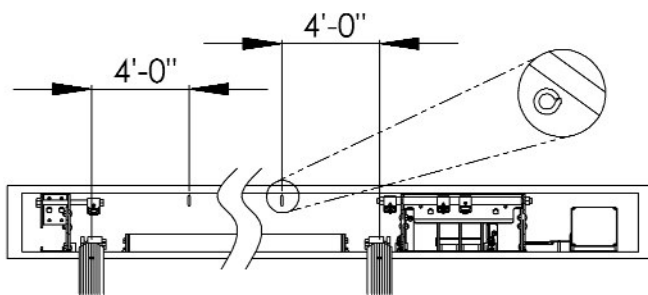
22

Toptrack installations: Raise the mechanism until the top of the mounting bracket is flush to top of the recessed box.

Undertrack installations: Raise the mechanism until the top of the mounting bracket is level with top of track.

Fasten the mounting brackets to the recessed box using the appropriate hardware: self tap screws for metal boxes, lag bolts or track screws for wood boxes, tapcons or track screws/anchors for concrete boxes. Use three (3) screws per bracket at motor end and two (2) per bracket on opposite end, for a total of (6) screws at motor end and (4) screws at opposite end.

23

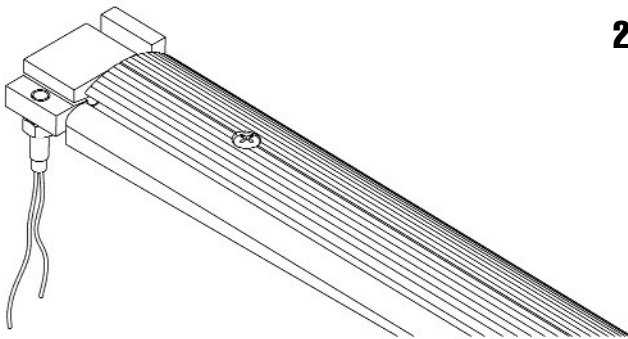


NOTE: Be careful not to shift the mechanism from side to side. Maintain the center line on the main tube and front of recessed box at all times.

Step Three – Install Rope Eyelets

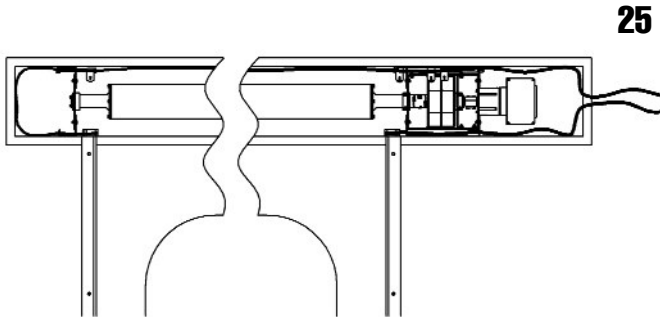
Measure the distance from the top of the recessed box to the top of the mounting bracket. This is the eyelet installation height. Install two eyelets on the backside of the recessed box at least four (4') feet from each end of the main track (pic. 23).

24



Step Four – Install Track Guides and Sensors

Make sure sensors are installed into guides flush with top of sensor plate. Tap guides into end of track at recessed

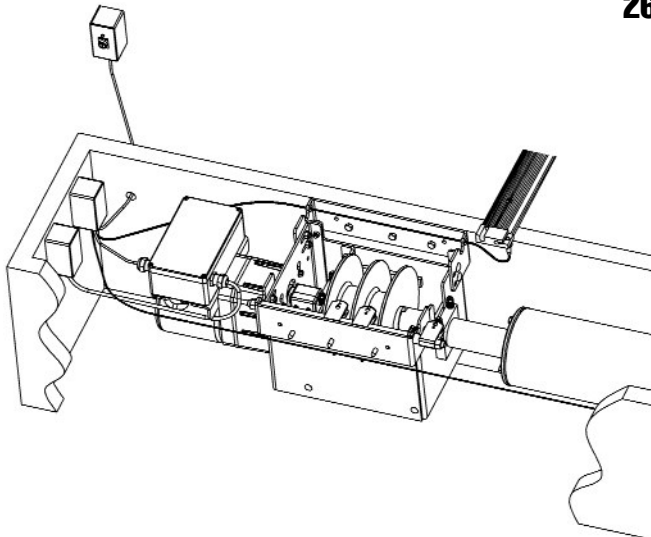


25

box end.

NOTE: Make sure sensor flange is facing towards the channel side of the track (fig. 24).

Run two-wire (sensor wire) **starting at opposite end** of box. Attach the sensor by using gray wire nuts. Run wire inside perimeter of the recessed box on the backside using wire staples or zip ties.



26

CAUTION: Make sure not to break, kink, or staple through the two-wire.

Run wire back to motor end of recessed box giving an extra two (2') feet allowance and then cut wire (fig. 25). **This is the opposite end sensor wire.** For motor end sensor, attach three (3') feet of two wire to motor end sensor.

HINT: On the motor end, pull the (3') feet wire through the front bracket holes (fig. 26).

27

Step Five – Wiring Keyswitch and Sensors

Now, wire the keyswitch and sensors (fig. 27). All wires must be housed in a standard junction box. There are eight (8) wires coming out of the circuit board box. There will be five (5) of these wires that go to the keyswitch; red, black, and green for the keyswitch and orange and yellow for the keyswitch light. The red and black wires control the **direction** of the cover and the green is the **common**. Connect the red and black to the top terminals and the green to the bottom (jumper) terminal. Next, connect the yellow and orange to the two (2) keyswitch light wires, using small gray wire nuts.

Next, take the four (4) sensor wires, from the opposite side sensor and the motor side sensor, and attach to the three (3) remaining wires from the circuit box. Take one (1) wire from each sensor and connect to the white wire using gray wire nuts. The two (2) remaining wires are connected to the blue and brown wires. Once all wires are in place then connect the power source. Turn power on to test system. Check keyswitch light. If the light is red, then switch the yellow and orange wires. If the light is green, then turn keyswitch to open. If the tube turns, then it is wired correctly. If the tube does not turn, then switch the black and red wires in the top of the keyswitch.

Step Six – Wiring Power Supply

All electrical wires pulled for the AutoGuard system must meet all State and Local codes and completed by a licensed electrician.

NOTE: All circuits need to be GFCI protected. Do not run low voltage and high voltage in the same conduit.

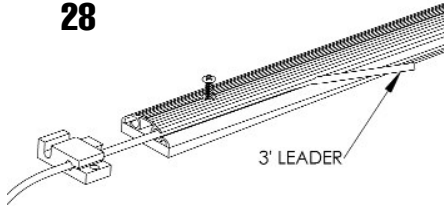
Have (3) 12 gauge wire (minimum gauge) pulled and secured into junction box. Using yellow wire nuts, make connections according to

**Service requirements:
115 VAC, 15A, 60 Hz, Single Phase**

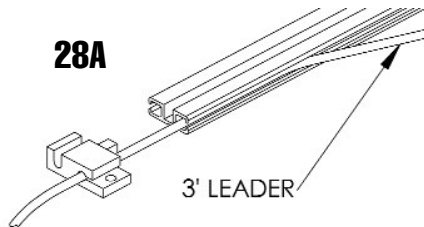
Wire Color	Function	
White	Neutral	
Black	Hot	
Green	Ground	

Keyswitch and Sensors		
Wire Color	Function	Destination
Red	Direction 1	Keyswitch
Brown	Limit 1	Limit sensor
Black	Direction 2	Keyswitch
Blue	Limit 2	Limit sensor
White	Common	Limit common
Green	Common	Keyswitch common
Orange	LED 1	Switchplate LED
Yellow	LED 2	Switchplate LED

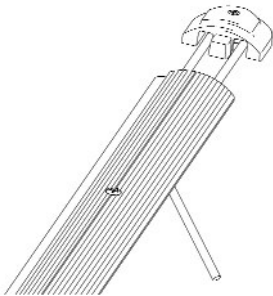
28



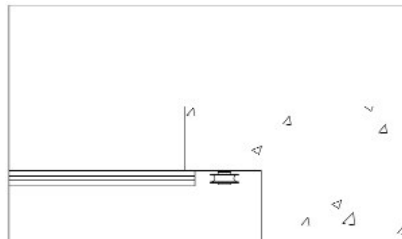
28A



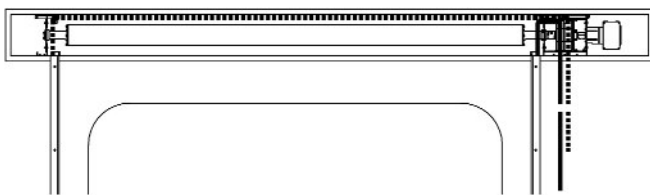
29



29A



30



Step Seven – Install Cover Fabric

Lay fabric out behind recessed box with the topside (smooth side) up showing warning labels. Uncoil both ropes and be careful not to tangle or knot. Remove guide from opposite side of track and feed the end of the rope through the sensor side of the guide leaving three (3') feet and then pull through the front channel of the track (fig. 28A and 28B). Reinstall the guide into track.

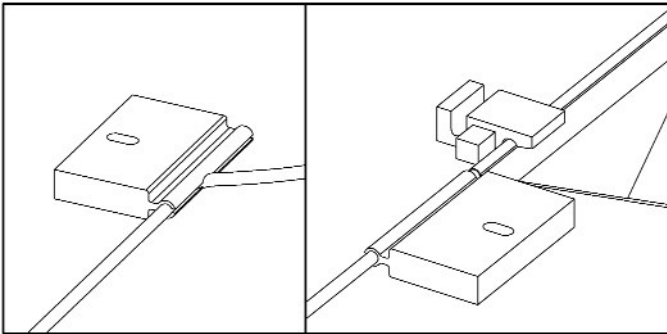
Pull rope down to the far end of the pool. Feed around the track pulley assembly (fig. 29A and 29B) while maintaining a three (3') foot leader and down the backside channel of the track through the back channel of the guide. Pull excess rope through until the front of cover is touching the guide.

Step Seven A

Feed **opposite end rope** around the opposite end pulley in the recessed box, then run rope through both eyelets on the back of the recessed box and all three pulleys on the motor side pulley bar laying remaining rope on deck (fig. 30 & 37). Next, pull the motor side rope through the tracks using the above steps. When you have the rope back at the recessed box, pull the rope through the **first two pulleys only** on the motor side pulley bar and lay remaining rope on deck. Secure the track screws using a #3 Philips head bit. Be careful not to strip the heads of the

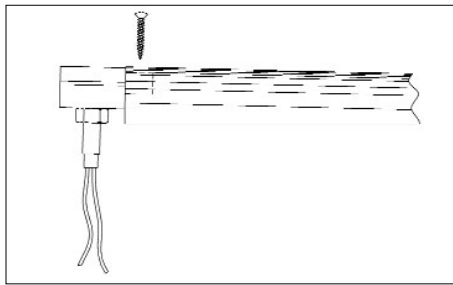
screws. Pull the ropes tight so both corners of cover are

31



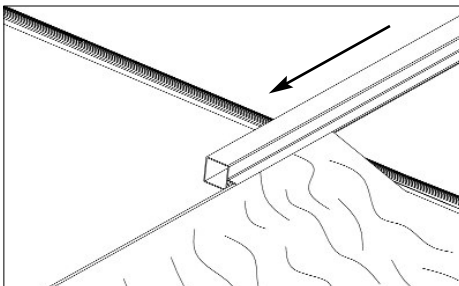
tight against the guides and measure approximately eight (8') feet from the pulleys. Cut the ropes **equally**. Immediately, use a cigarette lighter to melt the ends of the ropes to prevent fraying.

32



If job has gliders, install gliders at this time. Lay out the right and left gliders next to the appropriate guides (fig.34). Make sure the glider corners are filed so the rope will slide into the glider easily. Pull the cover into the guide, then carefully pull the guide apart from the track and slide the glider onto the rope in front of the cover/guide (fig. 31). Install the glider flush with the cover and reinstall the guide into the track. Drill a 5/32" hole through the track and guide 1/4" from the end of the track. Install the guide screw (fig. 32). Repeat the above steps on the other side.

33



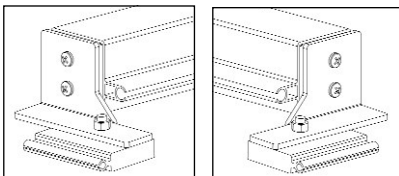
Drill a 5/32" hole through the track and guide 1/4" from the end of the track. Install the guide screw (fig. 32). Repeat the above steps on the other side.

Step Eight – Install Lead Edge Bar

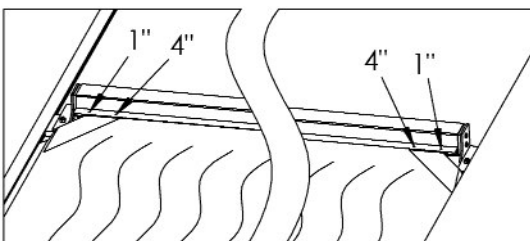
Pull one side of fabric into the track approximately one (1') foot. Make sure the lead edge bar is right side up with the four holes on top. Make sure that the lead edge channel ends are filed. Slide the lead edge bar completely across the front of the cover (fig. 33).

Left

Right

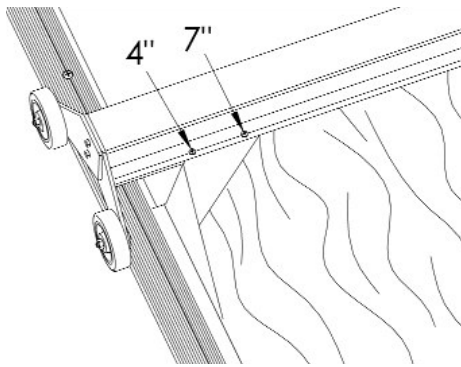


34



HINT: *The front of the cover needs to be tight for the lead edge to slide on easily.*

Next pull the other front corner of the cover into the track approximately one (1') foot making both sides even



35

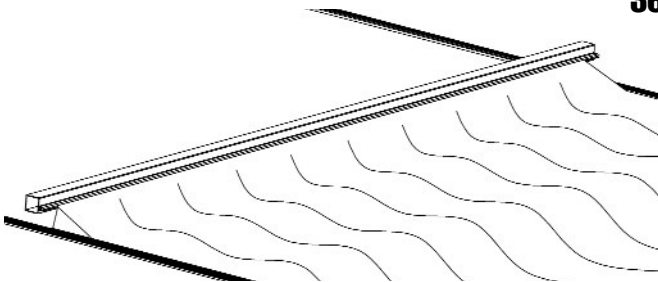
(fig. 34).

When installing an undertrack system, slide the lead edge bar onto the front of the cover and into glider dowel on other side. Reinstall fabric into the guide and slide other dowel into lead edge bar.

On a toptrack installation, flip the lead edge bar back onto the cover and secure the dowel and lead edge with a #10 x 1/2" Phillips screw on the bottom side of the lead edge bar. Flip lead edge bar back over and secure fabric to the lead edge bar using the predrilled holes (fig. 35).

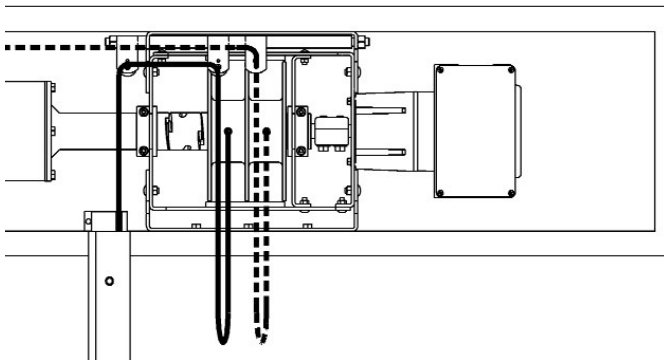
The holes should be centered between the white corner gusset. Do not fasten dowel to the lead edge bar on undertrack systems.

***NOTE:** Distribute the extra cover material evenly across the lead edge bar (fig. 36).*



36

37



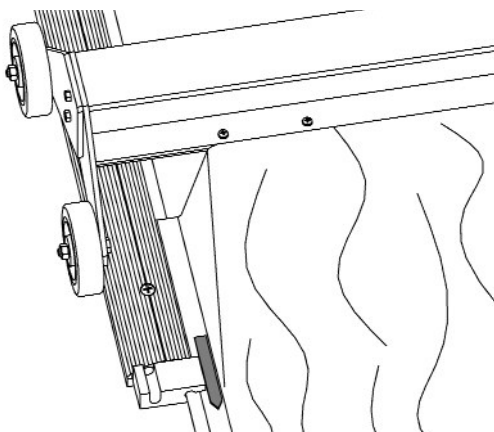
Step Nine – Pulling Fabric Onto Pool

Make sure lead edge bar is perpendicular with the tracks and pull the ropes to equal lengths.

***IMPORTANT:** Make sure fabric is straight across pool. If not, ropes will be different lengths, causing cover to run crooked.*

Attach both ropes one (1") inch from rope end to the rope reels using the screws in the predrilled holes (fig. 37). **Double check making sure to attach the rope to the correct rope reel.** It is now time to close

38A

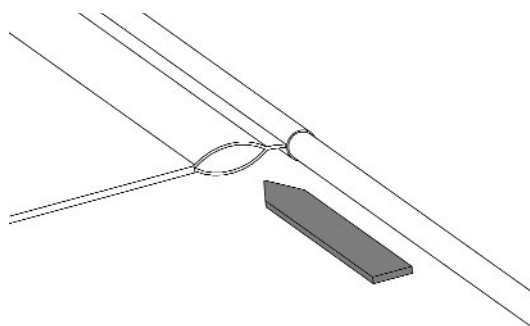


the cover.

EXTREME CAUTION: Keep fingers clear of ropes and pulleys while operating.

Turn key switch to close and ease ropes onto rope reels. This will help the ropes lay flat across the bottom of the reel and not stack up on one side.

38B



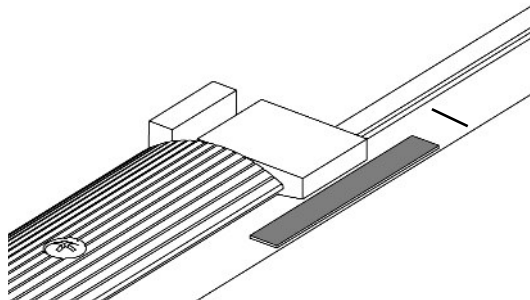
Once the excess rope is on the reels, the cover will start to pull across the pool. Watch both sides of the cover to make sure the cover is operating properly. Stop the cover approximately two (2') feet from the end of the pool.

Step Ten - Install Auto Shut Off Magnets

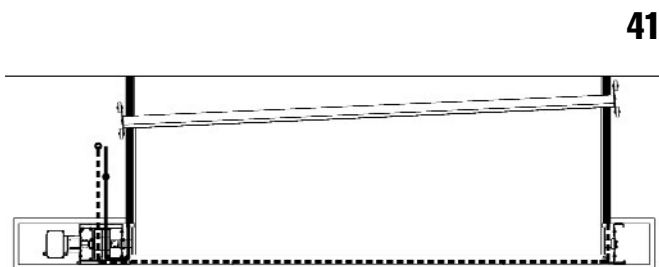
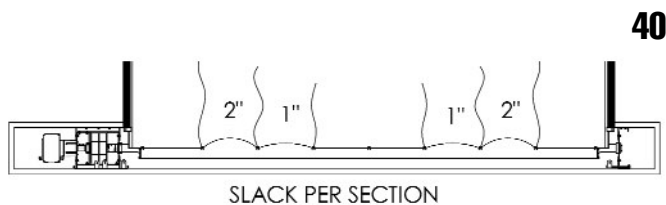
Take a magnet and pass it over the motor side sensor. Turn the keyswitch to close. If the cover moves, then the motor side sensor is the **open sensor**. If the cover does not move, the motor side sensor is the **close sensor**. Once this is determined, install the sensor magnets. **The open sensor magnet will go in the front of the cover on the open sensor side.** The close sensor magnet will go on the close sensor side in the back of the cover on the opposite side.

NOTE: The magnets will travel approximately one (1") inch past the sensor before the cover stops. Take this into consideration when installing the magnets.

39



Once the cover is open, the open magnet will need to slide into the webbing and pushed in from front of cover approximately 4" to 5" (inches) (fig. 38A and 38B). This is important because it will keep the cover from opening too far into



the recessed box or

coming out of the track and guide. The back close magnet should be set when the cover is closed. Stop the cover at handrail or before it hits the pulley castings at the end of the tracks. After closing the cover to the desired stopping point, cut a slit in the webbing eight (6") inches behind the guide and slide the close magnet into the webbing (fig. 39).

Step Eleven – Attaching Cover to Main Tube

The main tube is predrilled from the factory for ease of attaching the cover to the main tube. All screws will be one (1") inch from the back end of the cover. Start first screw one (1") inch from the back end of cover and next to webbing (fig. 40). Attach cover using #10 x 1/2" Phillips screws. The extra fabric will be spread out across the main tube evenly. There should be 3" to 4" (inches) of slack on each side of the centerline of the tube. *Now open the cover.*

NOTE: Make sure on the first opening of the cover that the magnet stops the cover properly.

Run cover 3 to 4 times out and back to make sure your magnets are set properly and cover is running square to pool. If cover is opening crooked, it needs to be adjusted. When opening cover, the side that returns first is the side that needs the rope shortened. The distance that it is off is the amount that you need to adjust. For example, if the motor side returns three (3") inches before the opposite



43

side, the motor side rope needs to be shortened three (3") inches (fig. 41). This is accomplished by removing both ropes from the rope reels and removing the motor side rope reel screw. Refasten the screw three (3") inches up on the rope and reattach to rope reel. Roll ropes back onto rope reels and run cover. If the opposite side of the cover returns first when opening, do the same procedure on the opposite side rope.

Step Twelve - Install Main Lid Assembly

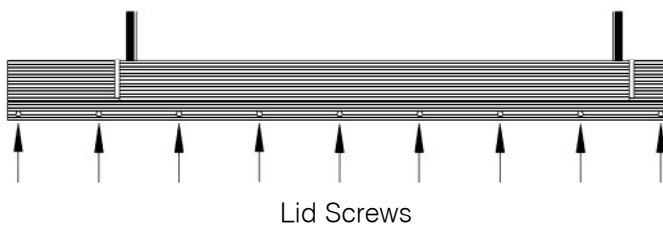
The lid hinge must first be slid onto the main lid. Install the lid bracket holders, next install the lid brackets. Space them evenly with the two (2) outside brackets one (1') foot in

from the tracks (fig. 42). Level the back of the bracket extension with the deck height. Use track screws to mount bracket holders in a wood box. Track screws & anchors on a concrete housing, self tap or tapcons on a metal box.

Lay the lid and lid hinge (lid assembly) on the top of the lid brackets centering the assembly between the tracks. Make sure it is equal distance on both sides of the tracks. Make sure the lid assembly covers the front and back of the box (fig. 43). Also, make sure the hinge covers both ends of the box by approximately one (1") inch. Cut any extra hinge with a hacksaw or circular saw. **File both ends of the hinge to make sure there are no sharp edges or burrs.** Drill 1/4" holes thru the lid hinge so the holes line up with the wood box (if applicable). Place a

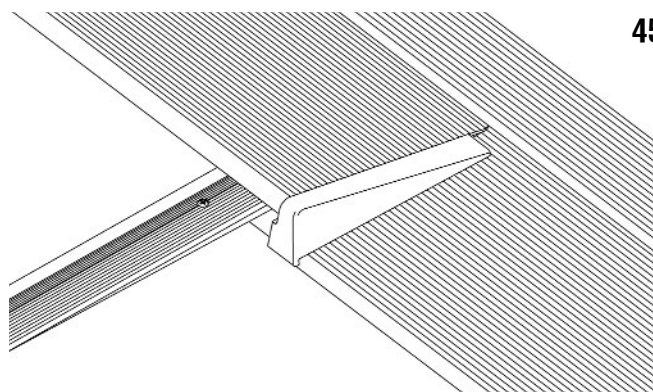


44

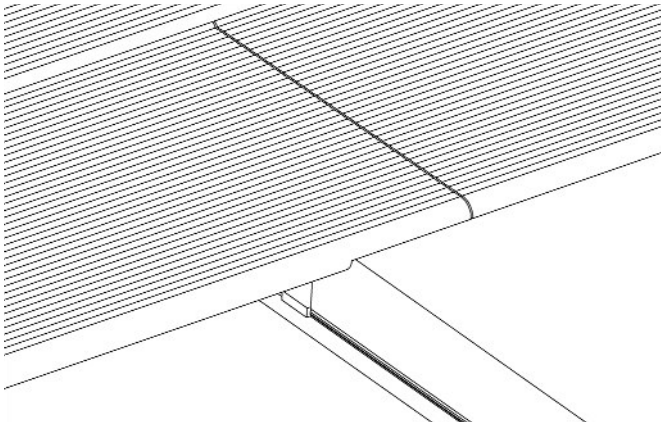


Lid Screws

45



46



screw 3" to 4" (inches) from each end of the hinge, then space the holes every four (4') feet (fig. 44). Secure lid hinge with screws and/or anchors depending on wood or concrete. **File the ends of the main lid** and center the lid again over the tracks.

If the job is a top track, it is time to install the lid triangles. Flip the motor side lid end over and install one of the lid triangles with (2) #10 x 1/2" Phillips screws (fig. 45). Reinstall the lid end, mark and cut to length using a jigsaw or circular saw. Repeat the same steps for installing the opposite side lid end and lid triangle. Double check to make sure the lid hinge, the lid ends, and main lid are filed thoroughly and do not have any sharp edges.

If the job is an undertrack, center the lid over the tracks and slide both the long and short lid ends onto the

THE JOB IS DONE. CONGRATULATIONS !!

After completing your installation, it is extremely important to instruct the owner on the proper operation and maintenance of their pool cover. This will insure complete customer satisfaction for years to come as well as maximizing your profits by avoiding costly call-backs due to improper operation. All of the instruction information needed to explain the proper use of a pool cover can be found in the owner's manual provided with every system.

Automatic Pool Covers, Inc. places a lot of emphasis on the owner's understanding of the operation of their new pool cover. If we can be of assistance, please contact us toll free at (800)-878-5789.

Please fill out the "Completion Checklist" with the homeowner and return a copy to Automatic Pool Covers, Inc.

While we strive to continually make our AutoGuard automatic pool cover one of the best forms of pool safety, **we believe there is no substitute for constant adult supervision.** Most drownings can occur in less than five minutes. Therefore, we suggest layers of protection and barriers to reduce the risks if a child were to step out of vision from the child's caretaker. The following are some suggestions for safety in and around your pool so you and your family can get the maximum enjoyment from your pool and pool cover.

- Never leave a child unsupervised in or near a pool.
- Teach children to float or swim as soon as possible.
- Instruct family and babysitters of potential hazards in and around the pool.
- Fence the pool area with self locking/closing gates with latches out of reach of young children.
- Do not consider children "drown proof" because they have had swimming lessons.
- Flotation devices are not a substitute for supervision.
- Never use a pool with the pool cover partially opened.
- Remove cover completely prior to getting into pool.
- Keep toys away from pool area to prevent children from accidentally falling into pool while playing.
- Have a telephone with emergency numbers near the pool area.
- Keep rescue equipment and first aid supplies near the pool.
- Have all caretakers trained in cardiopulmonary resuscitation (CPR) and first aid.
- No one should ever swim alone – even adults!
- Teach children what to do in case of an emergency.
- Caution all swimmers against showing off, playing rough, and the dangers of running and diving recklessly, pushing or dunking others in the pool.
- Keep all electrical appliances such as a radio away from the pool area. Make sure electrical work meets standards and are GFCI protected.
- Inspect pool cover and other equipment to maintain optimum effectiveness. Yearly inspection by a professional is recommended.
- When pool is not in use, close the cover completely.
- Remember animals and pets need to be protected also.
- Keep all doors and windows leading from the house to the pool area closed and locked to prevent children from slipping out of sight.
- Make sure to remove all standing water from the pool cover top. Drowning can occur in only a few inches of water.
- Never let anyone swim after drinking alcoholic beverages, eating, or taking medications.
- Make sure family and friends understand the importance of pool safety and adhere to all pool safety rules.
- Think smart and have fun!

Sources: United States Consumer Product Safety Commission; National Spa & Pool Institute.

Questions

Answers

1. Can I walk on the cover?

Yes, but recommended only in an emergency.

2. Is the cover too big?

The fabric is manufactured to include extra material for winterization. Initially, the fabric could appear wrinkled or oversized but these wrinkles are normal and may smooth out.

3. Can the cover be opened/closed manually?

Yes, it can. It will take (2) people. the cover will need to be pulled off by hand or pulled on by pulling the two ropes. Please contact your service representative for instruction.

4. Can I run the cover without water in the pool?

water

No. The cover can run only with a water level at a maximum of 2" below the skimmer. The fabric must be supported by in the pool.

5. Can I adjust the cover if it opens or closes crooked?

Yes. See chapter 4, step 11 for cover adjustment. If cover opens straight and is closing crooked, you will need to add rope to the reel that needs to close further. Call for assistance.

The cover does not open when I turn the key.

- Is the green keyswitch indicator light on? If not, you do not have power to the system. Check your electrical service.
- If the motor is turning and nothing is happening, you might need mechanical service. Please contact your installation company for possible repairs.
- If the motor just hums, and does not turn. Call for service.

Water appears on my cover when it has not rained in days.

- Your cover probably has a hole somewhere and needs to be patched. Contact your installation company. They can send you a patch kit to easily fix the problem.

The cover stops half way closed/opened.

- The tracks might have dirt or debris inside. Clean the tracks out with water.
- The ropes could be tangled around the rope reel. Lift the lid and check the reels. If the rope appears tangled, you can try to untangle it yourself (be careful!) or call for service.
- Automatic Shut-Off (ASO) could be malfunctioning. Call for service.

The keyswitch indicator light is blinking red.

- This means the cover has stopped under stress. There might be too much water on the cover. The cover could be running too crooked or there could be an object blocking the cover. Remove the water or blocking object. If red light continues to blink, call for service.

The cover is completely open and will not close.

- The cover might have opened too far and come out of the track. Call for service.
- Is the green keyswitch indicator light on? If not, you do not have power to the system. Check your electrical service.

Submersible cover pump is not pumping off the water.

- The Automatic Shut-Off (ASO) might be malfunctioning. Disconnect the dual plugs at the outlet and plug the smaller plug into the outlet. This will operate the pump without Automatic Shut-Off. If the pump works, then the problem is the ASO, and it should be replaced. If the problem is not the ASO, then the pump needs to be replaced.